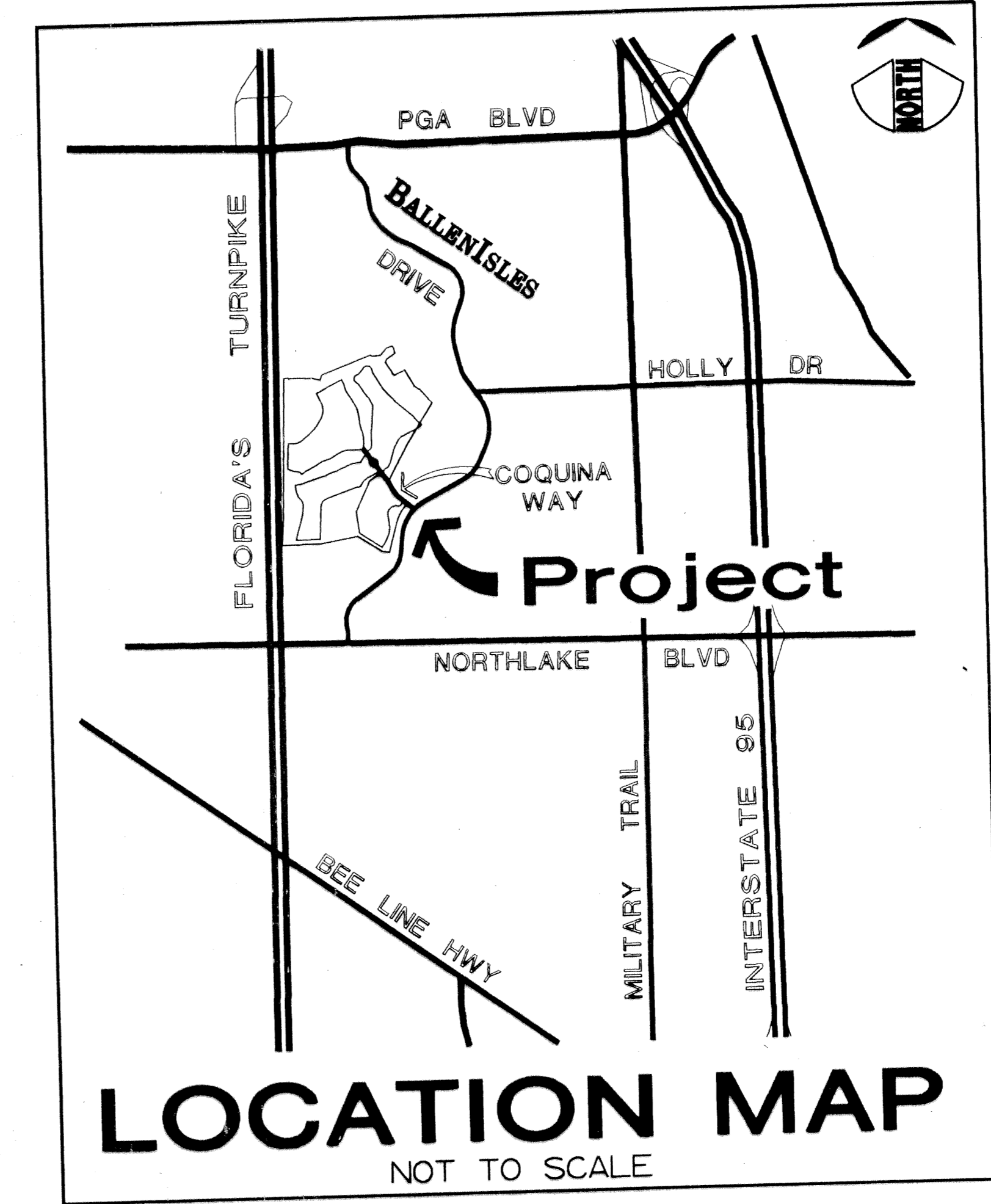
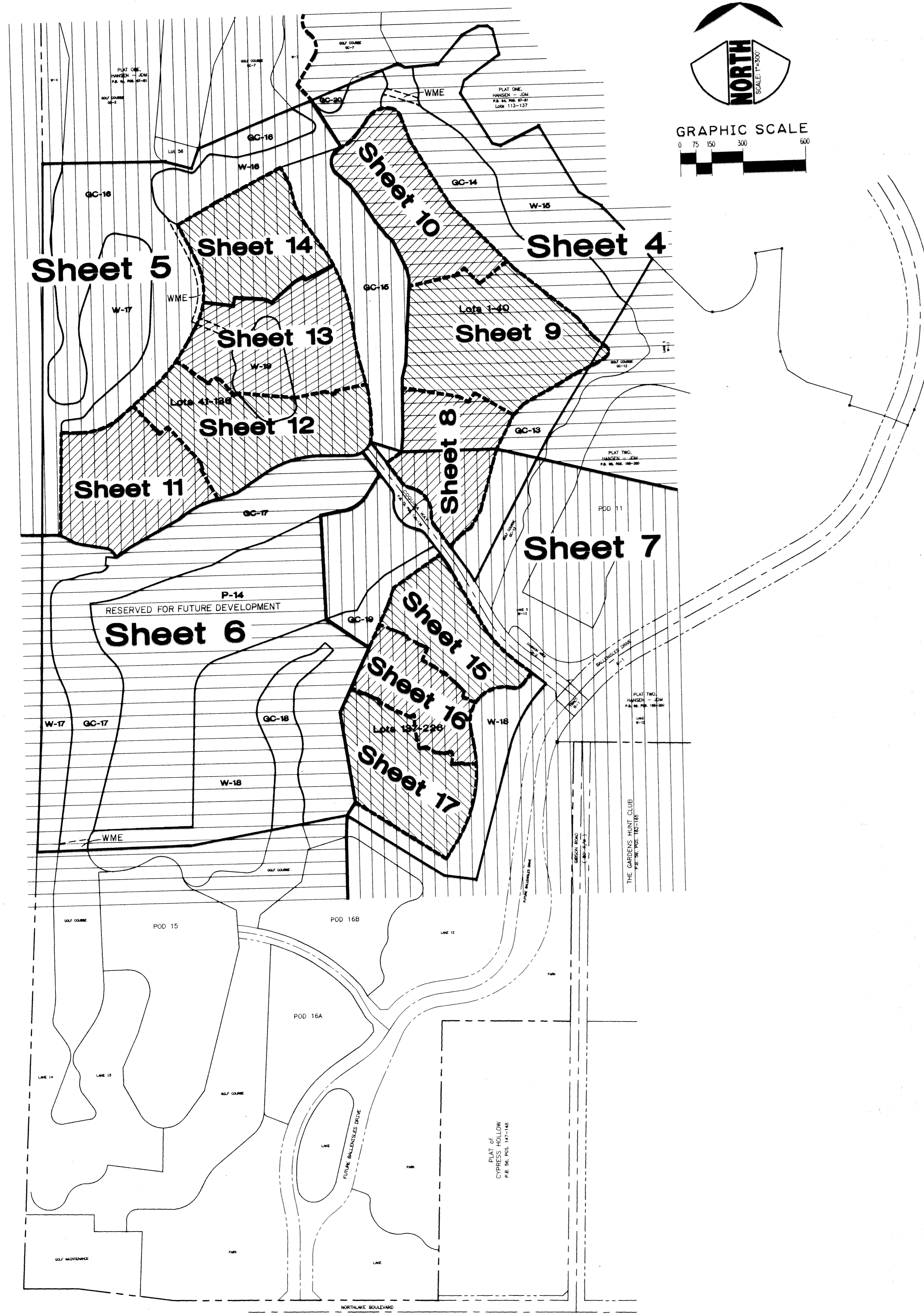


# PLAT THREE, BALLENISLES

BEING A REPLAT OF A PORTION OF PLAT TWO, HANSEN - JDM AS RECORDED IN PLAT BOOK 69, PAGES 195 - 200 OF THE PUBLIC RECORDS OF PALM BEACH COUNTY, FLORIDA AND ALSO BEING A PORTION OF SECTION 11 AND SECTION 14, TOWNSHIP 42 SOUTH, RANGE 42 EAST, CITY OF PALM BEACH GARDENS, PALM BEACH COUNTY, FLORIDA.

SHEET 3 of 17 JULY, 1994

STATE OF FLORIDA }  
 COUNTY OF PALM BEACH } SS  
 THIS PLAT WAS FILED FOR  
 RECORD AT \_\_\_\_\_ DAY OF  
 THIS \_\_\_\_\_ A.D. 1994 AND  
 DULY RECORDED IN PLAT BOOK  
 \_\_\_\_\_ ON PAGES \_\_\_\_\_ AND  
 \_\_\_\_\_  
 DOROTHY WILKEN, CLERK  
 CIRCUIT COURT.  
 BY: \_\_\_\_\_ DC



**NOTES:**

1. THERE MAY BE ADDITIONAL RESTRICTIONS THAT ARE NOT RECORDED ON THIS PLAT THAT MAY BE FOUND IN THE PUBLIC RECORDS OF THIS COUNTY.
2. THERE SHALL BE NO BUILDINGS, STRUCTURES, CONSTRUCTION OF ANY KIND, TREES OR SHRUBS PLACED ON WATER MANAGEMENT EASEMENTS (WME), WATER MANAGEMENT MAINTENANCE EASEMENTS (WME), OR ON THOSE LANDSCAPE EASEMENTS (LE) DEDICATED TO THE NORTHERN PALM BEACH COUNTY WATER CONTROL DISTRICT, AS SHOWN HEREON, UNLESS APPROVED, IN PERMIT FORM, BY THE SAID DISTRICT.
3. WHERE DRAINAGE AND UTILITY EASEMENTS INTERSECT, DRAINAGE EASEMENTS WILL TAKE PRECEDENCE.
4. THERE SHALL BE NO TREES, SHRUBS, OR LANDSCAPING PLACED ON WATER AND SEWER EASEMENTS OR DRAINAGE EASEMENTS, EXCEPT AS SHOWN ON THE APPROVED FINAL DEVELOPMENT PLAN AND/OR LANDSCAPE PLAN.
5. THERE SHALL BE NO BUILDINGS OR ANY KIND OF CONSTRUCTION PLACED ON UTILITY EASEMENTS OR DRAINAGE EASEMENTS.
6. APPROVAL OF LANDSCAPING ON UTILITY EASEMENTS OTHER THAN WATER AND SEWER SHALL BE ONLY WITH APPROVAL OF THE UTILITIES OCCUPYING SAME.
7. LOT LINES ARE NOT RADIAL UNLESS NOTED ( RAD ).
8. BEARING BASIS: BEARINGS HEREON ARE BASED UPON THE SOUTH LINE OF THE NORTH ONE-HALF OF SECTION 14, TOWNSHIP 42 SOUTH, RANGE 42 EAST, BEING NORTH 88°19'50" WEST.

**LEGEND**

- = SET PERMANENT REFERENCE MONUMENT ( PRM )
- = FOUND PERMANENT REFERENCE MONUMENT ( PRM )
- ▲ = PERMANENT CONTROL POINTS ( PCP )
- △ = FOUND PERMANENT CONTROL POINTS ( PCP )
- = CHANGE IN DIRECTION
- NPBCWCD = NORTHERN PALM BEACH COUNTY WATER CONTROL DISTRICT
- CL = CENTERLINE
- R/W = RIGHT-OF-WAY
- P.B. = PLAT BOOK
- PG = PAGE(S)
- ORB = OFFICIAL RECORD BOOK
- P.C. = POINT OF CURVATURE
- P.T. = POINT OF TANGENCY
- RAD = RADIAL
- R = RADIUS
- Δ = DELTA OR CENTRAL ANGLE
- A = ARC OR LENGTH OF CURVE
- T = TANGENT
- CH = CHORD BEARING
- WME = WATER MANAGEMENT EASEMENT
- WMAE = WATER MANAGEMENT ACCESS EASEMENT
- WMME = WATER MANAGEMENT MAINTENANCE EASEMENT
- DE = DRAINAGE EASEMENT
- IEE = INGRESS, EGRESS EASEMENT
- WSE = WATER AND SEWER EASEMENT
- WLE = WATER LINE EASEMENT
- SSE = SANITARY SEWER EASEMENT
- UE = GENERAL UTILITY EASEMENT
- LE = LANDSCAPE EASEMENT
- CA-# = COMMON AREA TRACT WITH NUMBER
- ECA-# = EXCLUSIVE COMMON AREA TRACT WITH NUMBER
- GC-# = GOLF COURSE TRACT WITH NUMBER
- W-# = WATER MANAGEMENT TRACT WITH NUMBER
- GP-# = GUEST PARKING TRACT WITH NUMBER

Subdivision # Plat 3, Ballen Isles  
 BOOK 73 PAGE 29  
 FLOOD MAP #  
 ZONING  
 ZIP CODE  
 PUP NAME  
 11/14/92/42  
 Palm Beach Gardens  
 TAZ 95

**KEY MAP**

**KESHAVARZ & ASSOCIATES, INC.**  
 THIS INSTRUMENT WAS PREPARED BY RICHARD P. BREITENBACH  
 IN THE OFFICES OF KESHAVARZ & ASSOCIATES, INC.  
 1280 N. CONGRESS AVENUE, SUITE 206  
 WEST PALM BEACH, FLORIDA 33409  
 (407) 689-8600/ FAX 689-7476